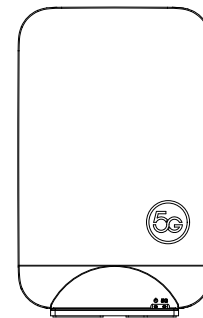


Vola Networks

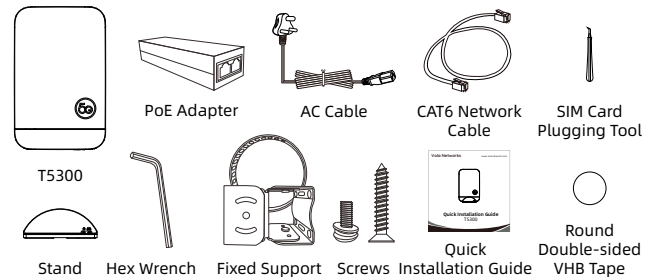
Quick Installation Guide T5300

www.volanetworks.com

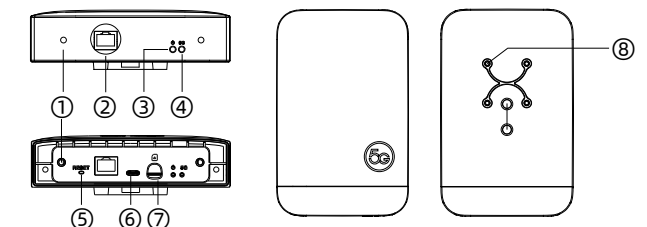


1 Packing List

The following items are included in your package. Please contact us or your service provider, if you find anything missing.



2 Physical Specification



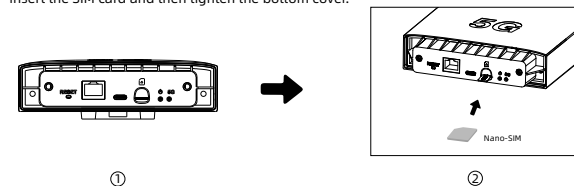
Number	Name	Description
①	Bottom Cover Screw Hole	Use for fixing the bottom cover
②	2.5 GE Network Port	Connect to PoE power adapter
③	Power Indicator	See the table below for details
④	5G Indicator	See the table below for details
⑤	Reset Button	Reboot: Press for 1~5s; Reset: Press for more than 5s
⑥	USB 3.0 Type-C	Configuration or emergency upgrade
⑦	SIM Card Slot	Insert a 5G SIM card to enable 5G network
⑧	Screws Holes of Fixed Support	Use for installing Fix Support

	Status	Description
Power Indicator	Steady Red	Booting/Rebooting/Device Disorder
	Fast Flashing Red (10Hz)	Resetting/Upgrading
	Steady Green	Successful Boot Up
	Off	Power Off

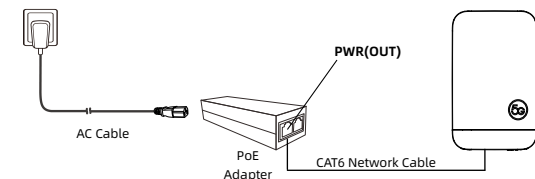
	Status	Description
5G Indicator	Steady Green	Strong signal
	Steady Blue	Medium signal
	Steady Red	Weak signal
	Slow Flashing Red (1Hz)	Internet Disconnected
	Fast Flashing Blue (10Hz) 3s	Switching Network Mode 4G<->5G
	Light Off	No SIM card or the SIM card can't be recognized correctly

3 Device Installation

1. Obtain a standard Nano-SIM card from your carrier, remove the rubber that covers the unscrew the two bottom screws with the correct screwdriver, open the bottom cover of the device, insert the SIM card and then tighten the bottom cover.



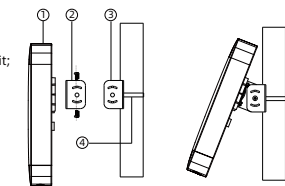
2. Connect the standard AC cable to one end of PoE adapter, then connect one end of the network cable to the "OUT" port of the PoE adapter, and the other end to the LAN port on the bottom of the device, and finally plug the AC cable into the power socket, the device will be power on, and automatically access the Internet. The IN port on PoE adapter is for sharing internet.



3. Install the device according to your scenario. The device supports four installation methods, please use accessories from Vola Networks.

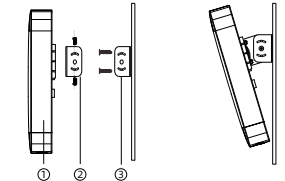
Pole-Fixed

- Put ④ around the mounting pole and through the hole of ③, then tighten ④ and the screws to fix it;
- Attach ② to the back of ① with the 4 screws included in the package;
- Align ② with the screw holes on both sides of ③, fix them with the 2 screws;
- Adjust the angle of the device to get best effect.



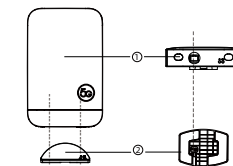
Wall-mounted

- Attach ③ to the wall with the 4 screws included in the package;
- Attach ② to the back of ① with the 4 screws included in the package;
- Align ② with the screw holes on both sides of ③, fix them with the 2 screws;
- Adjust the angle of the device to get best effect.



Desktop Install

- Place ② on the desktop and insert the bottom of ① against ②
- Check that the device indicator lights are properly displayed and that the bottom network port is properly exposed to ensure that the device is properly installed.



Window-mounted

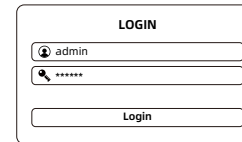
- Attach the round double-sided VHB tape included in the package to the front center of the device;
- Ensure that the installation position of the window is in a clean state without dust and water, press the device at the installation position of the window, and fix it after expelled the air.

4 Device Configuration

You can configure functions through the website by connecting the PC to the LAN port. Use another RJ45 cable to connect the IN port of the PoE adapter to the PC, and the PC can access the device management address (default: 192.168.255.1) through a browser to enter the login page.

The initial administrator for login to the web interface is admin/last 6 digits of SN,

After successful login, you will automatically enter the background configuration page to perform the corresponding configuration.



Safety and Regulation Requirement

This device complies with Part 15 of the FCC Rules. Operation is subject to the following two conditions:
(1) this device may not cause harmful interference, and (2) this device must accept any interference received, including interference that may cause undesired operation.

Warranty Policy

Thank you for purchasing our products. From the date of purchase, any product installed and used in accordance with the user manual is covered by our one-year free repair warranty. After one year, repairs will be charged at cost. Repairs not caused by product defects (such as damage resulting from improper use, inadequate storage, or unauthorized disassembly) will be charged for repair fees.